

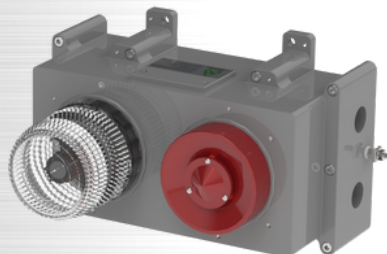
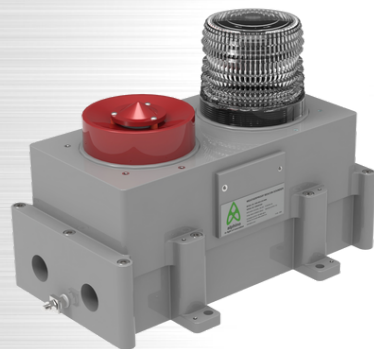
# ALPHINO SW2

## WEATHERPROOF BEACON WITH SOUNDER

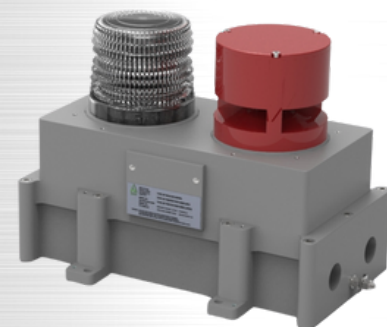


### FEATURES

- Ingress Protection Rating of IP66
- UV stable Glass Reinforced Polyester (GRP) enclosure
- UV stable, Chemical Resistance Polycarbonate Lens and Polyamide Sounder Cover
- Sounder Output: 110dB(A) @ 1w 1m, 124dB(A) Max with 1 KHz Tone
- Telephone ring interface capabilities (optional)
- Dry contact interface for activation via relay contact (optional)
- Voice/ Audio activation interface (optional)
- Ample space for cable termination, cable arrangement in spacious GRP enclosure
- Built-in connector (earth-stud) for external earth wire connection as safety grounding
- Selection of cable entry sizes (M25, M32, 3/4"NPT, 1"NPT)
- Available with Xenon Lamp or LED Lamp



SW2 Beacon Sounder With Directional Sound Guide



SW2 Beacon Sounder With 360° Sound Guide

### LED LAMP

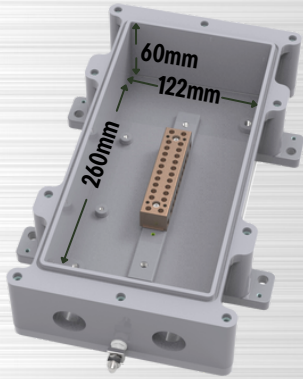
- Available with flash mode, rotating mode and steady mode
- User adjustable flash rate (30, 60, 120, 150, 180 fpm)
- User adjustable rotation rate (30, 60, 120, 150, 180 rpm)
- Available with 110~ 230 VAC or 12~48VDC Voltage Input

### XENON LAMP

- Wide selection on Xenon lamp energy level from 5, 10, 15, 21, 25 and 30Joule
- Standard flash rate of 60 fpm for Xenon Lamp Type
- Available with 110, 230 VAC or 24, 48 VDC Voltage Inputs



### SPACIOUS INTERNAL WIRING AREA



- Spacious wiring termination area (260L x 122W x 60 H mm) for easy access for wire termination during commissioning and maintenance works
- Easy and wide termination space allow reduce risks of damaging internal circuitry
- Ample space for additional wires for loop in/ loop out connections
- Extra space for further cable/ wiring arrangements for provisional system expansions

### DIRECTIONAL COVERAGES FOR VISUAL AND AUDIO SIGNALS

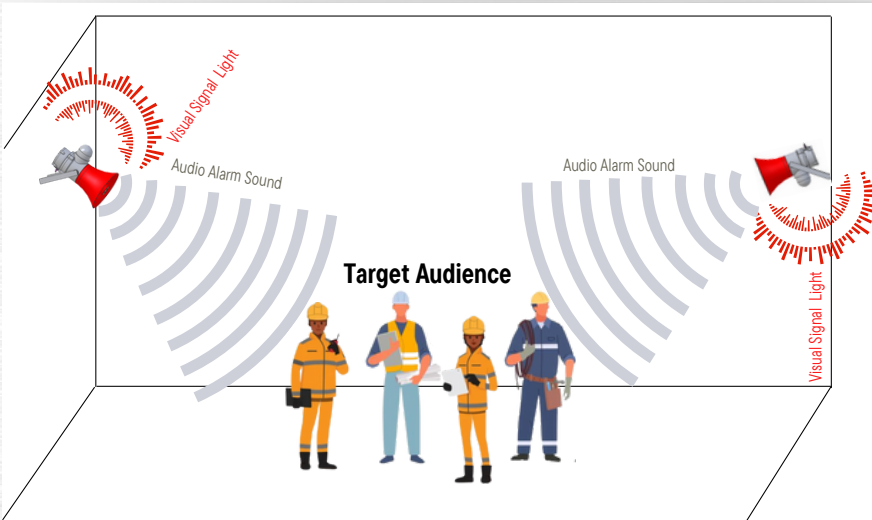
Alphino SW2 Beacon+Sounder



### Same Directional Distribution of Audio & Visual Signals Provides Better Signal Intelligibility And Awareness

- With Alphino SW2 Beacon+Sounder Unit, unblocked and non-interference of signal distribution between visual signal and sound signals is achieved
- Better signaling performance and heightened safety awareness, attention is assured.

Conventional Beacon+Sounder



### Different Directional Distribution of Audio & Visual Signals From Other Conventional Devices

- Due to different directional signal distribution between visual signals and sound signals, signal intelligibility and signal distribution may be degraded towards target audience.

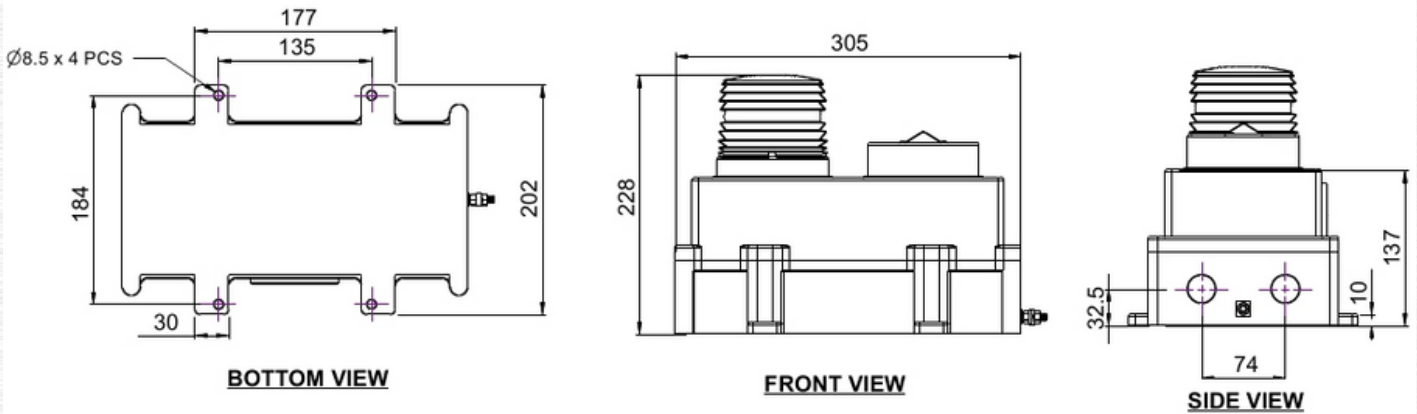
# ALPHINO SW2

## WEATHERPROOF BEACON WITH SOUNDER



**alphino**  
in light of innovation

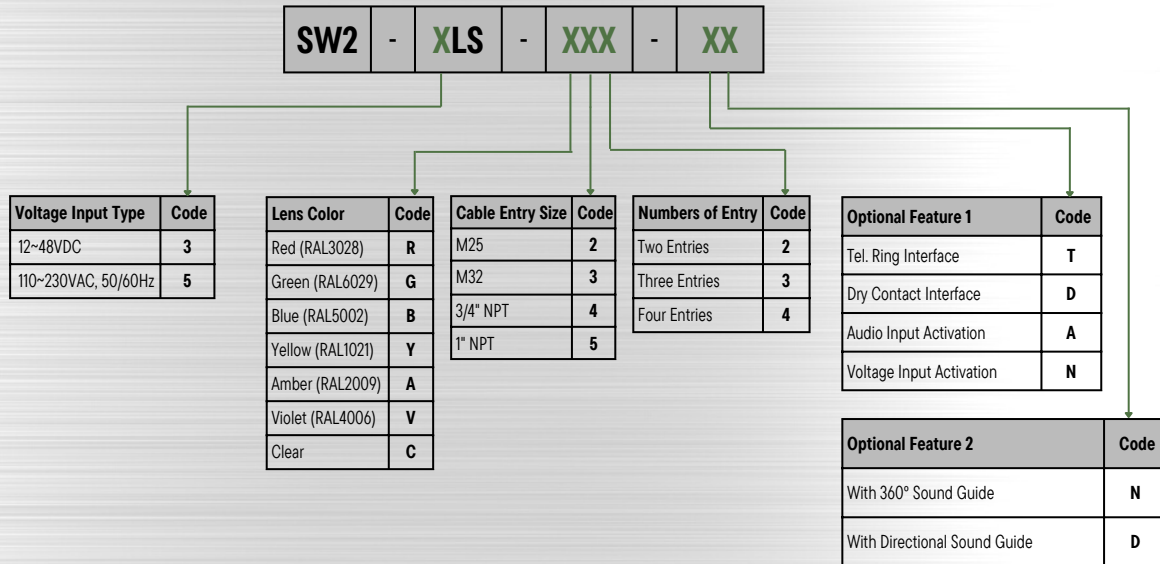
### GENERAL DIMENSION



### SPECIFICATIONS

Rated Input Voltage (LED)	110~240VAC 50/60 Hz, 12~48VDC
Rated Input Voltage (Xenon)	110VAC, 230VAC : 50/60 Hz, 24VDC, 48VDC
Rotation Per Minute (RPM), LED only	30, 60, 80,100, 150, 180
Flashes Per Minute (FPM)	30, 60, 80,100, 150, 180 for LED Lamp, Standard 60 fpm for Xenon Lamp
Available Xenon Lamp Output	5, 10, 15, 21, 25 and 30 Joule
Average Lifetime of Xenon Lamp	More than 5 millions flashes
Sounder Output	110dB(A) @1m, 124dB(A) at Max with 1KHz Tone
Operating Temperature (Xenon Lamp Type)	-55 °C to 70 °C@ Humidity 5% ~ 95%
Operating Temperature (LED Lamp Type)	-40 °C to 70 °C@ Humidity 5% ~ 95%
Ingress Protection	IP66
Colors of Dome	Red, Green, Blue, Yellow, Amber, Violet, Clear
Mounting Positions	Any Direction
Cable Entries	2x M25 as default ( up to max of 4 entries and M32, 3/4"NPT, 1"NPT are available as optional )
Material	Glass reinforced polyester (GRP) Enclosure, PC Lens, Polyamide Sounder Cover
General Dimension	305 x 202 x 227 (mm)
Gross Weight	4.5kg
<b>Operating Voltage, LED Lamp Type</b>	<b>Peak Current ( Sounder at 110dB(A)@1m )</b>
110~230VAC 50Hz, for LED model only	250mA (110VAC), 200mA (230VAC)
12~48VDC, for LED model only	320mA (48VDC), 600mA (24VDC), 1200mA (12VDC)
<b>Operating Voltage, Xenon Lamp Type</b>	<b>Average Current ( Sounder at 110dB(A)@1m )</b>
110VAC 50Hz, for Xenon Model only	515mA (5J), 600mA (10J), 675mA (15J), 1070mA (21J), 1080mA (25J), 1150mA (30J)
230VAC 50Hz, for Xenon Model only	260mA (5J), 250mA (10J), 355mA (15J), 535mA (21J), 560mA (25J), 715mA (30J)
24VDC, for Xenon Model only	800mA (5J), 1150mA (10J), 1250mA (15J), 1590mA (21J), 1610mA (25J), 1850mA (30J)
48VDC, for Xenon Model only	480mA (5J), 620mA (10J), 700mA (15J), 860mA (21J), 900mA (25J), 1020mA (30J)

### ORDERING INFORMATION - LED LAMP TYPE



### ORDERING INFORMATION - XENON LAMP TYPE

